

NOTES: UNLESS OTHERWISE SPECIFIED:

1. MATERIAL: 6061-T6 ALUMINUM
2. LIGHT BEADBLAST EXTERIOR SURFACES ONLY (MATTE FINISH);
3. FINISH: ANOPLATE ANOBLACK EC PROCESS: ALTERNATE BLACK ANODIZING PROCESSES ARE NOT CONSIDERED AN EQUIVALENT.

© COPYRIGHT 2013 TEXAS INSTRUMENTS
UNPUBLISHED, ALL RIGHTS RESERVED

| REVISIONS | | | |
|-----------|--------------------------------|------------|----|
| REV | DESCRIPTION | DATE | BY |
| A | ECO #2136196 - INITIAL RELEASE | 10-24-2013 | |

D

C

B

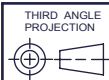
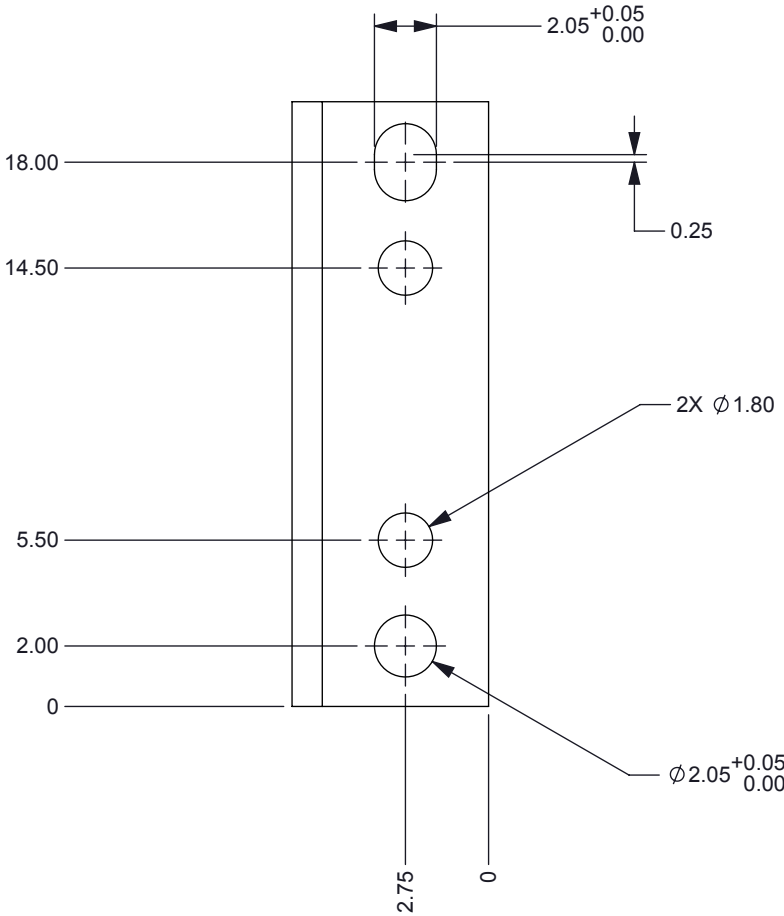
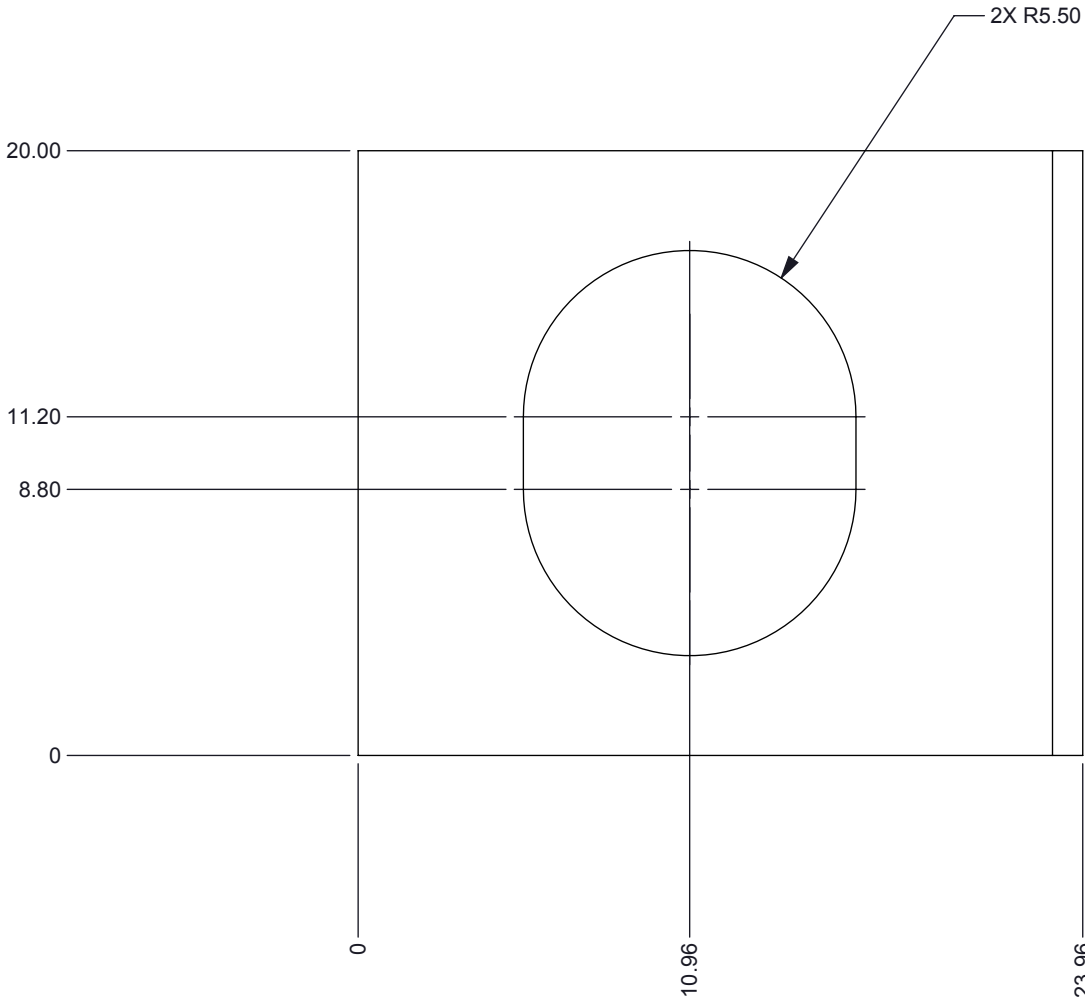
A

D

C

B

A



| NEXT ASSY | USED ON |
|-------------|---------|
| APPLICATION | |

UNLESS OTHERWISE SPECIFIED

- DIMENSIONS ARE IN MILLIMETERS
- TOLERANCES: ANGLES $\pm 1^\circ$
2 PLACE DECIMALS ± 0.25
1 PLACE DECIMALS ± 0.50
- DIMENSIONAL LIMITS APPLY BEFORE PROCESSES
- INTERPRET DIMENSIONS IN ACCORDANCE WITH ASME Y14.5M-1994
- REMOVE ALL BURRS AND SHARP EDGES
- PARENTHETICAL INFO FOR REF ONLY

| | |
|---------------------|--------------------|
| DWN STEVE SMITH | DATE 10/24/2013 |
| Engr STEVE SMITH | 10/24/2013 |
| CQE/QA | |
| CM | |
| Apprvd | |

| | | | |
|-------------------|-------------------|--------------|--|
| TEXAS INSTRUMENTS | | APERTURE | |
| | | | |
| SIZE B | DWG NO 2513402 | REV A | |
| SCALE 5:1 | | SHEET 1 OF 1 | |